



SPECIFICATION SHEET

PVE 50 PR

Powerful, Versatile and Efficient Piling Rig



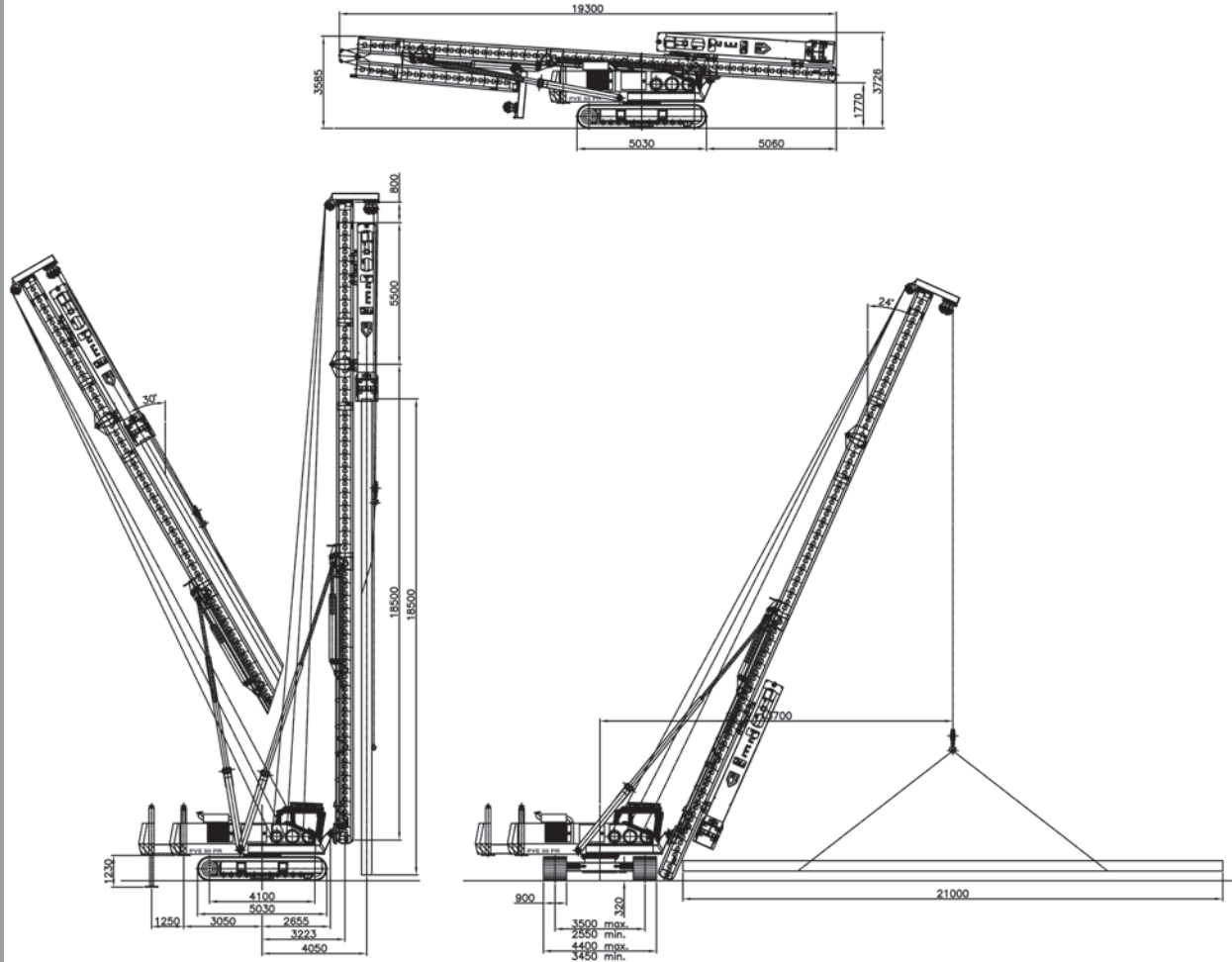
GÁNDARA

SU EQUIPO EN CIMENTACIÓN

High capacity, **Very quick to**
assemble, Fast and efficient, Very reliable,
CAT engine, **New type of Cabin**



PVE is continuously improving their range of equipment. Developments in relation to emission standards and fuel efficiency might result in different specifications. No rights can be attached to the dimensions and specifications mentioned on this leaflet because they might have changed without further notification. All data is subject printing and conversion errors.



All dimensions are in millimeters

TECHNICAL SPECIFICATIONS

Max. pile & hammer weight	40,786 lbs (18,5 ton)
Capacity hammer winch	13,228 lbs (6 ton)
Capacity pile winch	13,228 lbs (6 ton)
Capacity optional aux. winch	8,818 lbs (4 ton)
Standard leader length	81.4 ft (24,8 m)
Maximum leader length	91.2 ft (27,8 m)
Maximum pile length	71.0 ft (21,6 m)
Diesel engine	Caterpillar C-7
Output diesel engine	250 HP / 183 kW

Electrical system	24 Vdc
Hydraulic system	Open Loop
Hydraulic pumps	Bosch-Rexroth
Hydraulic valve blocks	Bosch-Rexroth
Transport width	11.32 ft (3.450 mm)
Transport length	63.32 ft (19.300 mm)
Transport height	11.76 ft (3.585 mm)
Transport height incl. hammer	11.96 ft (3.645 mm)
Transport weight excl. hammer	112,436 lbs (51 ton)