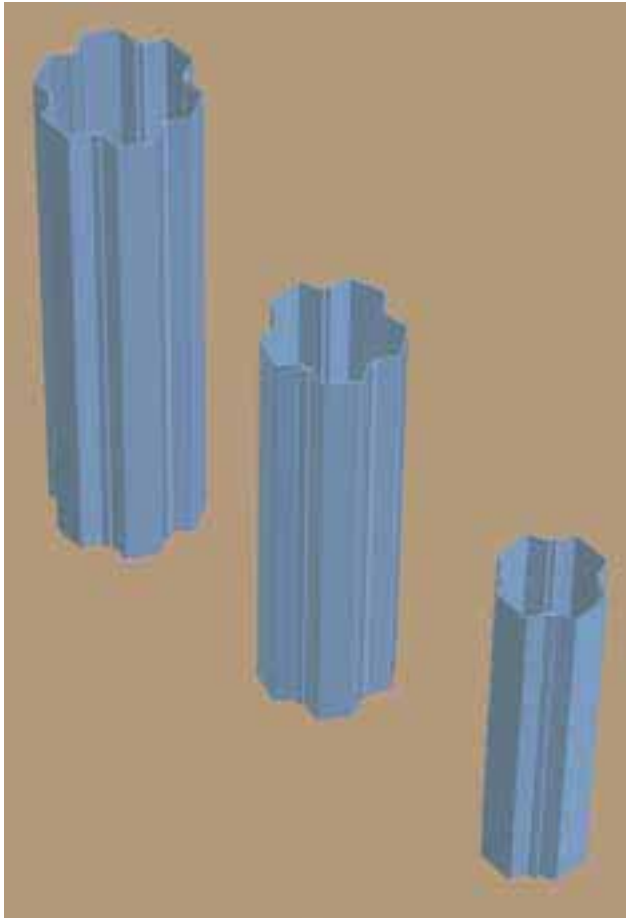


FOUNDATION PILING: SUSTAINABLE CONSTRUCTION

'CATHEDRAL' COLUMN / PILE



DAWSON PRODUCT RANGE

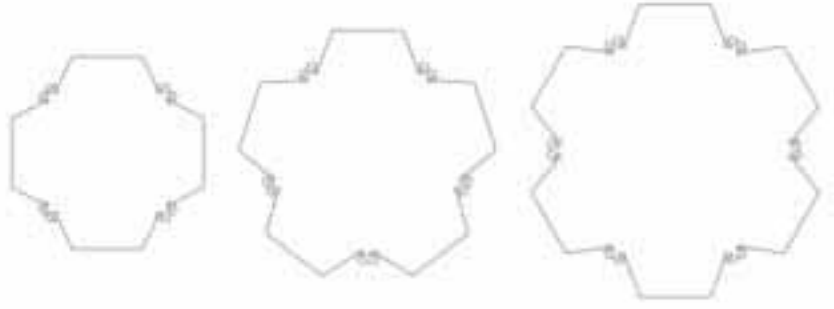
- »» Push Pull Foundation Piling
- »» Quiet / vibrationless Sheet Piling
- »» Hydraulic Impact Hammers for Foundation Piles, Sheet Piles, Conductor Piles
- »» Excavator Mounted Vibrators
- »» High Frequency Vibrators
- »» Hydraulic Extractors to 1000 tonnes
- »» Track Mounted Leader Rigs with Vibro, Single and Double Rotary Drill and Impact Hammer
- »» Pile Capping System
- »» Sheet Pile Threaders
- »» Remote Release Lifting Shackles
- »» Special Handling Tools
- »» Cleaners for Continuous Flight Augers



DAWSON CONSTRUCTION PLANT LTD
Chesney Wold Bleak Hall Milton Keynes MK6 1NE England
Tel: (01908) 240300 Fax: (01908) 240222
Int.Tel: +44 1908 240300 Int.Fax: +44 1908 240222
Email: dawson@dcpuk.com Website: dcpuk.com



DAWSON
CONSTRUCTION PLANT LTD



PUSH PULL SYSTEM FOUNDATION PILING

- »» Working loads from 200 to 1400 Tonnes
- »» Quiet
- »» Vibrationless
- »» No soil removal to landfill
- »» No ground heave
- »» Factory quality material
- »» Removable - restoring land to greenfield
- »» Recyclable material
- »» Measured load carrying capacity as product of installation method
- »» Low mass/volume material transport
- »» Immediate loading
- »» Fast drive rate for high productivity/shortened contract period
- »» Can accept side load/flexure
- »» Can be leader rig mounted or crane suspended
- »» Can be adapted to operate under water

A Dawson sustainable construction product





Structures are designed and built for shorter working lives.
The cycle of re-construction comes round faster



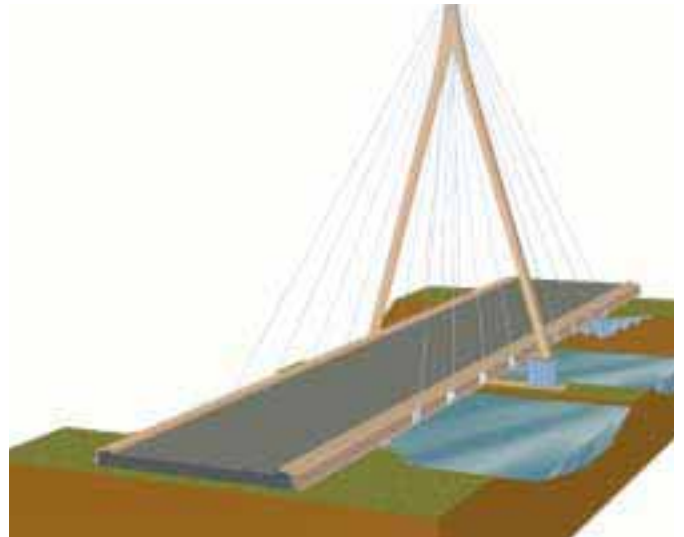
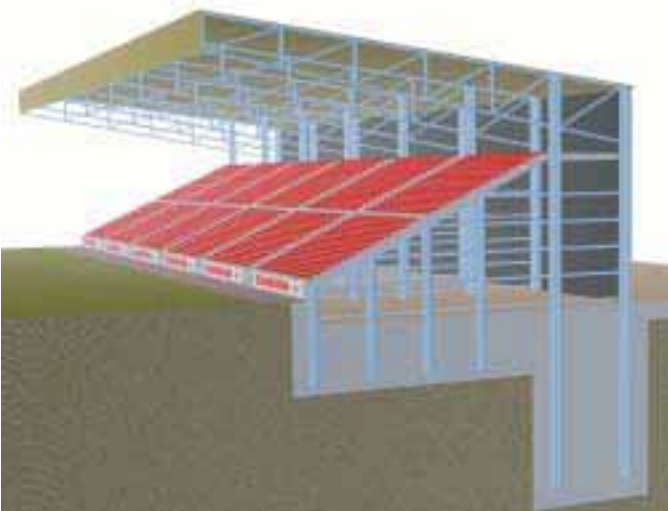
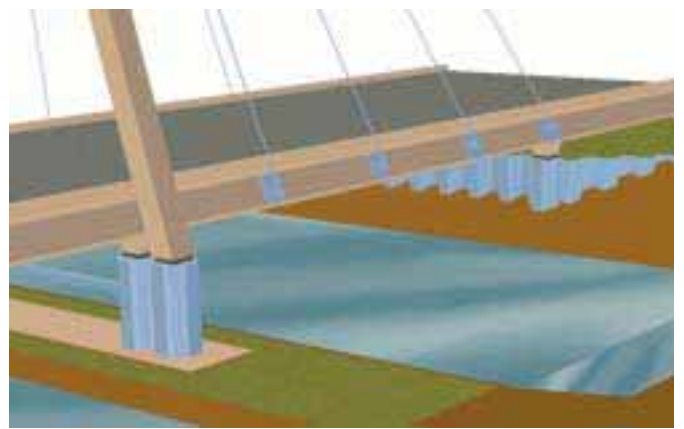
Structures are designed and built for shorter working lives.
The cycle of re-construction comes round faster



Structures are designed and built for shorter working lives.
The cycle of re-construction comes round faster

Stand Alone Foundation Piles / Columns
for Buildings and Bridges

Integral Foundation Piles / Columns with Retaining Walls
for Buildings and Bridges








Structures are designed and built for shorter working lives. The cycle of re-construction comes round faster



Structures are designed and built for shorter working lives.



Structures are designed and built for shorter working lives. The cycle of re-construction comes round faster

		Safe Working Load in Tonnes			
Profile	Steel Grade				
L X 16	S275 S355	420	525	630	
		550	685	825	
		366	457	548	Mass kg/m
L X 20	S275 S355	460	575	690	
		605	755	910	
		402	502	603	Mass kg/m
L X 25	S275 S355	515	645	770	
		675	845	1015	
		449	561	674	Mass kg/m
L X 32	S275 S355	605	755	905	
		795	990	1190	
		527	658	787	Mass kg/m
L X 38	S275 S355	725	904	1085	
		950	1185	1425	
		631	788	946	Mass kg/m